

canfield connector
8510 Foxwood Court
Youngstown, Ohio 44514
(330) 758-8299 Fax: (330) 758-8912
www.canfieldconnector.com

SERIES 9K

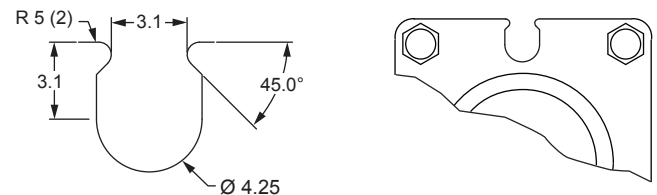
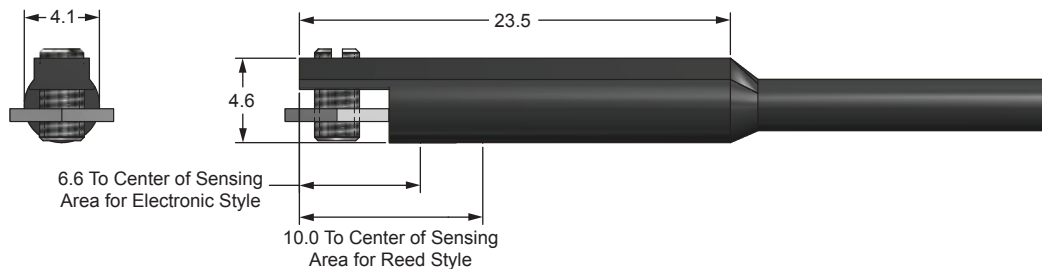
REED & ELECTRONIC MAGNETIC SENSORS FOR 4.2MM "T" GROOVE APPLICATIONS

General Description

The Canfield Connector Series 9K is a profile mounting type switch that fits in a 4.2mm "U" groove which normally is designed into an aluminum extrusion type linear actuator. Available in reed or electronic versions, the 9K is also available with a 9 ft. PVC or 8mm quick connect male pigtail. The switch is IP67 which is dust tight and water resistant.

Dimensional Data

ALL DIMENSIONS ARE IN MILLIMETERS UNLESS OTHERWISE NOTED



GROOVE
DIMENSIONS

Groove: Mindman, Koganei

Technical Data

- Temperature Range: Operational from -10° to +70°C
- Shock: Operational up to 30G reed and up to 50G for electronic
- Vibration: Operational up to 9G reed and electronic
- All versions designed to meet NEMA 6 / IP67 specifications
- Sensitivity and Orientation: 40 gauss parallel (electronic)
60 gauss parallel (reed)

Features

- Small sensor fits most space requirements.
- Indicator light
- Corrosion and washdown resistant
- Electronic sensing version (no moving parts)
- Reverse polarity protection
- CE approved
- AC/DC for reed. DC only for electronic
- Compatible with IS (Intrinsically Safe) barriers

Ordering Information

9K10-000-□□□

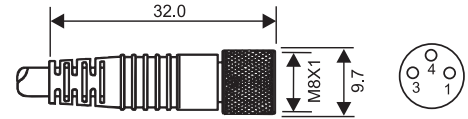
Connection Options

- 0 - 9 ft PVC cable
- 3 - 8mm quick connect male pigtail*

*Mates with cordsets shown at right.

Mating Cordsets

8mm female molded locking connectors



Order part number

Brown = Pin 1
Blue = Pin 3
Black = Pin 4

RC08S-F0M030120 (2m length)
RC08S-F0M030150 (5m length)

Type	Description	Function	Switching Voltage	Switching Current	Switching Power	Voltage Drop	Magnetic Sensitivity
02	Reed Switch with Red LED	Normally Open SPST	5 - 120V AC/DC	0.03 Amps Max.	4 watts Max.	2.5 Volts	60 Ga.
31	Electronic for Reed Magnet, with Grn LED & Sourcing	Normally Open PNP	5 - 28 VDC	0.2 Amps Max.	4.8 watts Max.	.5 Volts	40 Ga.
32	Electronic for Reed Magnet, with Red LED & Sinking	Normally Open NPN	5 - 28 VDC	0.2 Amps Max.	4.8 watts Max.	.5 Volts	40 Ga.

Ordering Example:

9K10-000-002

9 ft. PVC cable, reed switch with red LED, SPST, 5 - 120V AC/DC 50/60 Hz

For convenience and faster shipping, this series is available in Can-Paks.

