

**canfield connector**  
8510 Foxwood Court  
Youngstown, Ohio 44514  
(330) 758-8299 Fax: (330) 758-8912  
www.canfieldconnector.com

## SERIES 9M50

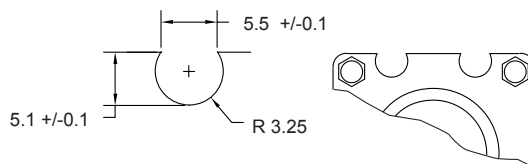
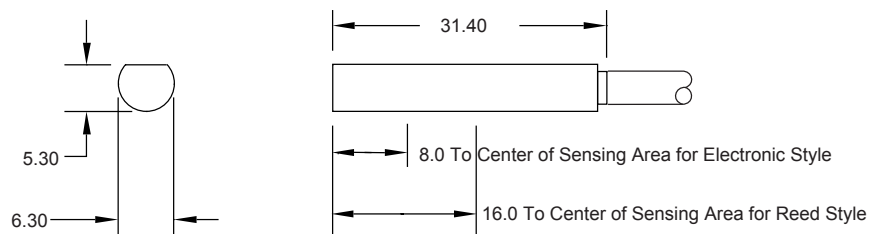
## REED & ELECTRONIC SENSORS FOR 6.5MM GROOVE APPLICATIONS

### General Description

The Canfield Connector 9M50 is a compact full featured magnetic proximity switch designed to fit a "D" shaped groove detail designed into linear actuators. The innovative design allows the switch to be inserted anywhere along the linear actuator and then rotated and locked into position. When installed the switch lies flat against the cylinder housing and does not protrude beyond the cylinder face making installations neat and clean. The fully encapsulated switch is offered in reed, and electronic styles in either NPN or PNP. The robust epoxy encapsulated design meets IP67, NEMA 6 environmental protection. Voltage ranges are available from 5 to 120 VAC/DC in multiple versions. Maximum current draw is 200 mA. Standard connection is provided by a 9 ft. PVC or 8mm quick connect male pigtail.

### Dimensional Data

ALL DIMENSIONS ARE IN MILLIMETERS UNLESS OTHERWISE NOTED



GROOVE  
DIMENSIONS




### Technical Data

- Temperature Range: Operational from -10° to +70°C
- Shock: Operational up to 30G reed and up to 50G for electronic
- Vibration: Operational up to 9G reed and electronic
- All versions designed to meet NEMA 6 / IP67 specifications
- Sensitivity and Orientation: 40 gauss parallel (electronic)  
60 gauss parallel (reed)

### Features

- Small sensor fits most space requirements.
- Indicator light
- Corrosion and washdown resistant.
- Electronic sensing version (no moving parts)
- Reverse polarity protection
- CE approved
- DC or AC voltage versions
- Compatible with IS (Intrinsically Safe) barriers
- Molded construction for wet environment (NEMA 6)
- Available in Normally Closed versions

## Ordering Information

9M5010-000- 

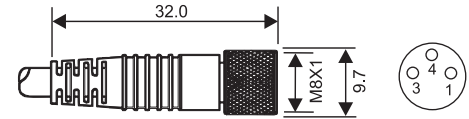
### Connection Options

- 0 - 9 ft PVC cable
- 3 - 8mm quick connect male pigtail\*

\*Mates with cordsets shown at right.

### Mating Cordsets

8mm female molded locking connectors



### Order part number

Brown = Pin 1  
Blue = Pin 3  
Black = Pin 4

RC08S-F0M030120 (2m length)  
RC08S-F0M030150 (5m length)

Type	Description	Function	Switching Voltage	Switching Current	Switching Power	Voltage Drop	Magnetic Sensitivity
02	Reed Switch with Red LED	Normally Open SPST	5 - 120V AC/DC	0.03 Amps Max.	4 watts Max.	2.5 Volts @ 100mA	60 Ga.
31	Electronic for Reed Magnet, with Grn LED & Sourcing	Normally Open PNP	5 - 28 VDC	0.2 Amps Max.	4.8 watts Max.	1.5 Volts @ 200 mA	40 Ga.
32	Electronic for Reed Magnet, with Red LED & Sinking	Normally Open NPN	5 - 28 VDC	0.2 Amps Max.	4.8 watts Max.	1.5 Volts @ 200 mA	40 Ga.

### Ordering Example:

9M5010-000-002

9 ft. PVC cable, reed switch with red LED, SPST, 5 - 120V AC/DC 50/60 Hz

For convenience and faster shipping, this series is available in Can-Paks.

