

**canfield connector**  
8510 Foxwood Court  
Youngstown, Ohio 44514  
(330) 758-8299 Fax: (330) 758-8912  
www.canfieldconnector.com

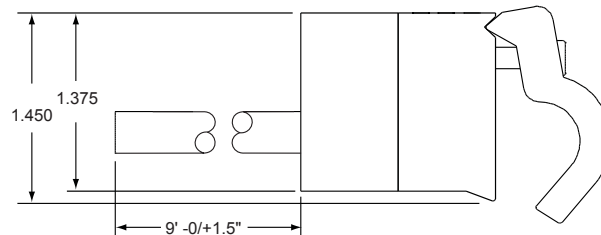
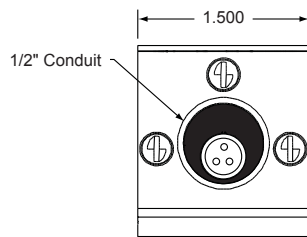
## SERIES 7GL

## GENERAL LOCATION MAGNETIC PROXIMITY SENSORS FOR TIE ROD CYLINDERS

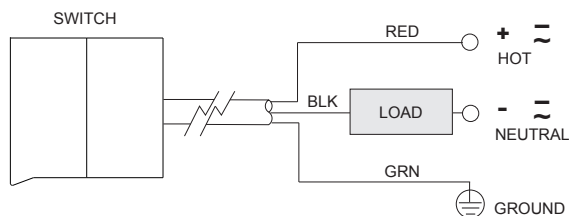
### General Description

The Canfield Connector 7GL is an expansion of the popular Series 7000 “floating” clamp design, which adapts to NFPA tie rod linear actuators with 2 to 8 inch bore. This rugged magnetic proximity sensor can sense actuator position in stringent, general location applications. The switch features a robust, aircraft aluminum body, epoxy-filled, vibration and shock resistant, electronic circuit. Available in a normally open contact, the 7GL can switch current up to .5 Amps and has a voltage range of 0-120VAC/VDC 50/60 Hz.

### Dimensional Data

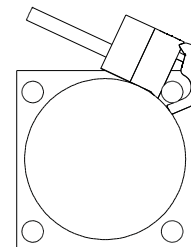


### Electrical, Mounting Installation



⎓ Both direct and alternating current

⊕ Earth (ground) TERMINAL



MOUNTING

### Technical Data

- Temperature Range: Operational from -20° to +80°C
- Shock: Operational up to 30 G (11ms)
- Vibration: Operational up to 20 G (10 - 55 Hz)
- Sensitivity: 85 Gauss parallel minimum, as measured on the surface of actuator
- Environmental protection: NEMA 1, 4 and 13
- Body Material: Anodized 6061-T6 Aluminum, Epoxy encapsulated printed circuit board
- Wire: PVC 20/3 Leads
- Circuit: S.P.S.T., Normally Open
- Operating Voltage: 0 - 120 V AC/DC 50/60 Hz
- Maximum Load (Power Rating): 10W, Resistive Only
- Maximum Current: 0.5A Max.
- Response Time ON: 0.5ms
- Response Time OFF: 0.1ms

### Features

- Normally open reed switch for general location
- Metal body with robust 1/2" conduit
- Fully encapsulated electronics
- Cam-lock clamp ensures proper assembly and sensor position
- Compatible for wash down
- Compatible with anodized 6061 Aluminum material

### Ordering Information

Order # 7 G L 1 0 - 0 0 0 - 0 0 1