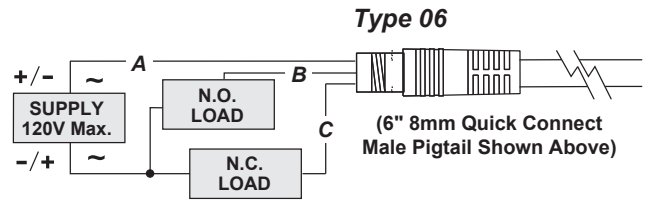
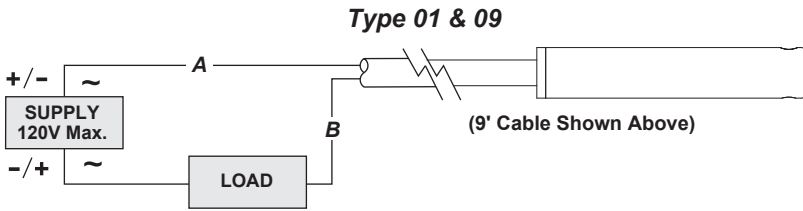


SERIES 8F TYPE 01, 06, 09 Wiring Diagram

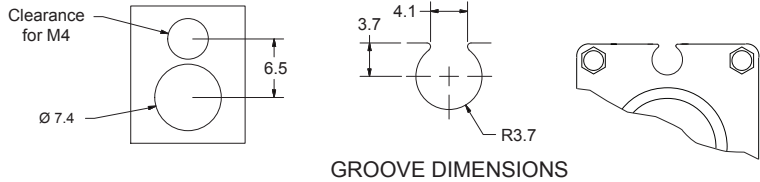
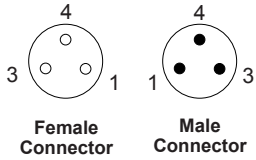


WIRE COLOR CODE		
	9' Cable	6" 8mm Connector
A	BRN	BRN = PIN 1
B	WHT	BLU = PIN 3
C	GRN	BLK = PIN 4

Type	Description	Function	Switching Voltage	Switching Current	Switching Power	Voltage Drop	** Magnetic Sensitivity
01	Reed Switch	Normally Open	0 - 120V AC/DC	2 Amps Max.	40 Watts Max.	0 Volts	85 Ga.
06	Reed Switch	SPDT	0 - 120V AC/DC	0.25 Amps Max.	5 Watts Max.	0 Volts	85 Ga.
09	Reed Switch	Normally Closed	0 - 120V AC/DC	0.25 Amps Max.	5 Watts Max.	0 Volts	85 Ga.

**Minimum gauss rating required for proper operation; as measured 4.5 above sensing surface. Size of sensing area depends upon size and strength of magnet and thickness of cylinder wall.

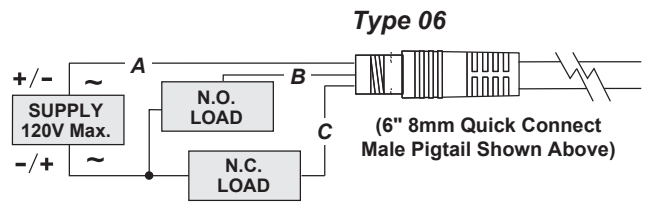
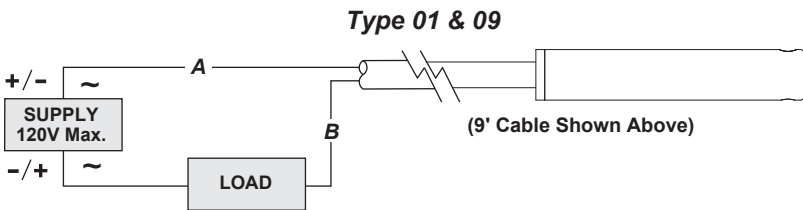
WARNING: Do not exceed ratings. Permanent damage to sensor may occur.



www.canfieldconnector.com

A56-1589 Rev.00

SERIES 8F TYPE 01, 06, 09 Wiring Diagram

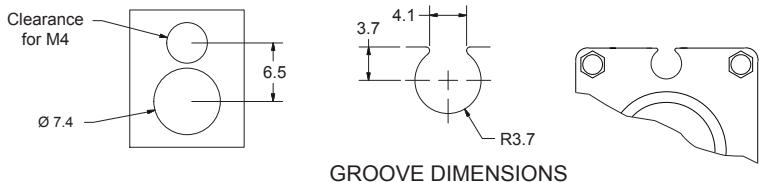
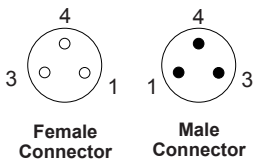


WIRE COLOR CODE		
	9' Cable	6" 8mm Connector
A	BRN	BRN = PIN 1
B	WHT	BLU = PIN 3
C	GRN	BLK = PIN 4

Type	Description	Function	Switching Voltage	Switching Current	Switching Power	Voltage Drop	** Magnetic Sensitivity
01	Reed Switch	Normally Open	0 - 120V AC/DC	2 Amps Max.	40 Watts Max.	0 Volts	85 Ga.
06	Reed Switch	SPDT	0 - 120V AC/DC	0.25 Amps Max.	5 Watts Max.	0 Volts	85 Ga.
09	Reed Switch	Normally Closed	0 - 120V AC/DC	0.25 Amps Max.	5 Watts Max.	0 Volts	85 Ga.

**Minimum gauss rating required for proper operation; as measured 4.5 above sensing surface. Size of sensing area depends upon size and strength of magnet and thickness of cylinder wall.

WARNING: Do not exceed ratings. Permanent damage to sensor may occur.



www.canfieldconnector.com

A56-1589 Rev.00