

canfield connector
8510 Foxwood Court
Youngstown, Ohio 44514
(330) 758-8299 Fax: (330) 758-8912
www.canfieldconnector.com

SERIES 7HL

HAZARDOUS LOCATION MAGNETIC PROXIMITY SENSORS FOR TIE ROD CYLINDERS INSTALLATION GUIDE

Application Recommendations and Precautions

This switch has been carefully engineered and tested, but since it may be installed in virtually an unlimited number of applications under a great variety of plant conditions, it should be installed as outlined below to provide maximum reliability.

1. Always stay within the specifications and power rating limitations of the unit installed.
2. Primary and control circuit wiring should not be mixed in the same conduit. Motors will produce high impulses that will be introduced into the control wiring if the wiring is carried in the same conduit.
3. Never connect the switch without a load present. The switch will be destroyed.
4. Some electrical loads may be capacitive. Capacitive loading may also occur due to distributed capacity in cable runs over 25 feet. In order to obtain optimum performance and long life, magnetically operated limit switches should not be subjected to (1) strong magnetic fields, (2) extreme temperature ranges, and (3) excessive ferrous filling or chip buildup.
5. Conduit must be used on switch to meet Hazardous Location Standards

⚠ Improper wiring will damage or destroy the switch. Therefore, the wiring diagram, along with the listed power ratings, should be carefully observed before connecting power to the switch.

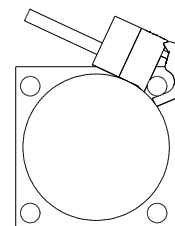
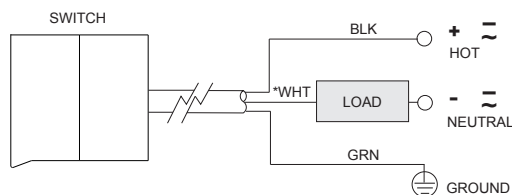
WARNING - EXPLOSION HAZARD - DO NOT DISCONNECT EQUIPMENT UNLESS POWER HAS BEEN SWITCHED OFF OR THE AREA IS KNOWN TO BE NON-HAZARDOUS.

Technical Data

- Temperature Range: Operational from -20° to +80°C
- Shock: Operational up to 30 G (11ms)
- Vibration: Operational up to 20 G (10 - 55 Hz)
- Sensitivity: 85 Gauss parallel minimum, as measured on the surface of actuator
- Pollution Degree: 3
- Environmental protection: NEMA 1, 4 and 13
- Hazardous location ratings:
 - CSA: Class I, Division 2, Groups A, B, C and D;
Class II, Division 2, Groups F and G; and Class III
- Body Material: Anodized 6061-T6 Aluminum, Epoxy encapsulated printed circuit board
- Wire: SJE00W 18/3 Leads
- Circuit: S.P.S.T., Normally Open
- Operating Voltage: 0 - 120 V AC/DC 50/60 Hz
- Maximum Load (Power Rating): 10W, Resistive Only
- Maximum Current: 0.5A Max.
- Response Time ON: 0.5ms
- Response Time OFF: 0.1ms

Do not use on relay loads or with incandescent bulbs.

Electrical, Mounting Installation



MOUNTING

*White wire must be permanently reidentified to indicate its use as an ungrounded conductor, by painting or other effective means at its termination, and each location where the conductor is visible and accessible. Per NEC Article (200.7)