

**canfield connector**  
8510 Foxwood Court  
Youngstown, Ohio 44514  
(330) 758-8299 Fax: (330) 758-8912  
www.canfieldconnector.com

## SERIES 7GL

## GENERAL LOCATION MAGNETIC PROXIMITY SENSORS FOR TIE ROD CYLINDERS INSTALLATION GUIDE

### Application Recommendations and Precautions

This switch has been carefully engineered and tested, but since it may be installed in virtually an unlimited number of applications under a great variety of plant conditions, it should be installed as outlined below to provide maximum reliability.

1. Always stay within the specifications and power rating limitations of the unit installed.
2. Primary and control circuit wiring should not be mixed in the same conduit. Motors will produce high impulses that will be introduced into the control wiring if the wiring is carried in the same conduit.
3. Never connect the switch without a load present. The switch will be destroyed.
4. Some electrical loads may be capacitive. Capacitive loading may also occur due to distributed capacity in cable runs over 25 feet. In order to obtain optimum performance and long life, magnetically operated limit switches should not be subjected to (1) strong magnetic fields, (2) extreme temperature ranges, and (3) excessive ferrous filling or chip buildup.

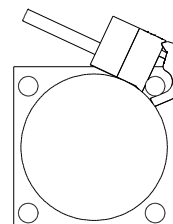
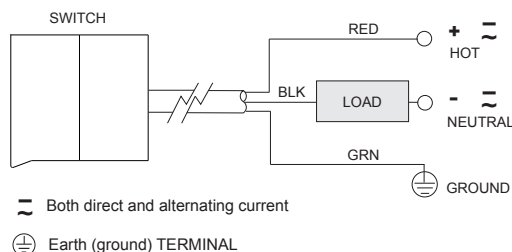
**⚠** Improper wiring will damage or destroy the switch. Therefore, the wiring diagram, along with the listed power ratings, should be carefully observed before connecting power to the switch.

### Technical Data

- Temperature Range: Operational from -20° to +80°C
- Shock: Operational up to 30 G (11ms)
- Vibration: Operational up to 20 G (10 - 55 Hz)
- Sensitivity: 85 Gauss parallel minimum, as measured on the surface of actuator
- Environmental protection: NEMA 1, 4 and 13
- Body Material: Anodized 6061-T6 Aluminum, Epoxy encapsulated printed circuit board
- Wire: PVC 20/3 Leads
- Circuit: S.P.S.T., Normally Open
- Operating Voltage: 0 - 120 V AC/DC 50/60 Hz
- Maximum Load (Power Rating): 10W, Resistive Only
- Maximum Current: 0.5A Max.
- Response Time ON: 0.5ms
- Response Time OFF: 0.1ms

**Do not use on relay loads or with incandescent bulbs.**

### Electrical, Mounting Installation



MOUNTING